



MASTER LEDtube EM/ Mains T8

MAS LEDtube 1200mm HO 14W865 T8

The Philips MASTER LEDtube integrates a LED light source into a traditional fluorescent form factor. Its unique design creates a perfectly uniform visual appearance which cannot be distinguished from traditional fluorescent. For those that are looking for value for money within limited budget and re-lamping efforts for better light effect and lifetime.

Product data

General Information		Starting Time (Nom)	
Cap-Base	G13 [Medium Bi-Pin Fluorescent]		0.5 s
Nominal Lifetime (Nom)	50000 h	Warm Up Time to 60% Light (Nom)	0.5 s
Switching Cycle	200000X	Power Factor (Nom)	0.9
B50L70	50000 h	Voltage (Nom)	220-240 V
Light Technical		Temperature	
Color Code	865 [CCT of 6500K]	T-Ambient (Max)	45 °C
Luminous Flux (Nom)	2100 lm	T-Ambient (Min)	-20 °C
Luminous Flux (Rated) (Nom)	2100 lm	T-Storage (Max)	65 °C
Correlated Color Temperature (Nom)	6500 K	T-Storage (Min)	-40 °C
Color Consistency	<6	T-Case Maximum (Nom)	55 °C
Color Rendering Index (Nom)	83	Controls and Dimming	
LLMF At End Of Nominal Lifetime (Nom)	70 %	Dimmable	No
Operating and Electrical		Mechanical and Housing	
Input Frequency	50 to 60 Hz	Product Length	1200 mm
Power (Rated) (Nom)	14 W	Approval and Application	
Lamp Current (Max)	65 mA	Energy Saving Product	Yes
Lamp Current (Min)	60 mA		

MASTER LEDtube EM/Mains T8

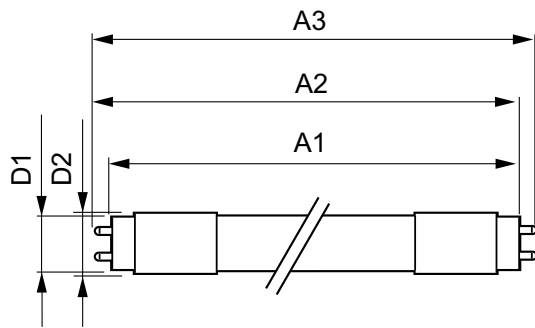
Energy Efficiency Label (EEL)	A++
Approval Marks	CE marking RoHS compliance KEMA Keur certificate
Energy Consumption kWh/1000 h	14 kWh
Product Data	
Full product code	871869668728400
Order product name	MAS LEDtube 1200mm HO 14W865 T8
EAN/UPC - Product	8718696687284

Order code	929001299408
Numerator - Quantity Per Pack	1
Numerator - Packs per outer box	10
Material Nr. (12NC)	929001299408
Net Weight (Piece)	0.215 kg

Warnings and Safety

- NOTES: The overall energy efficiency and light distribution of any installation that uses these lamps are determined by the design of the installation.

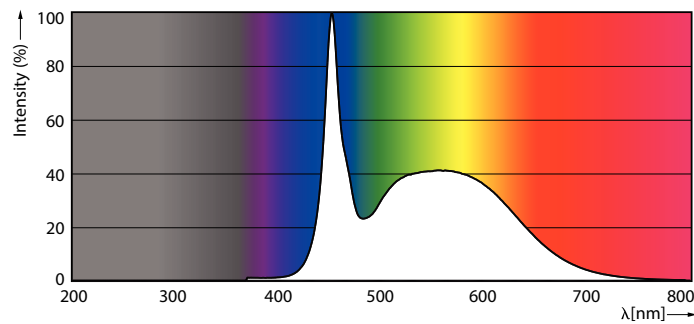
Dimensional drawing



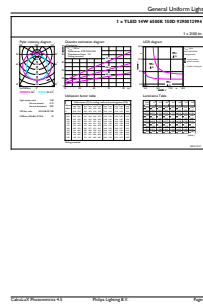
TLED 4ft 14W-36W 2100lm 150D 6500K G13ND

Product	D1	D2	A1	A2	A3
MAS LEDtube 1200mm HO 14W865 T8	25.8 mm	28 mm	1198.2 mm	1205.3 mm	1212.4 mm

Photometric data

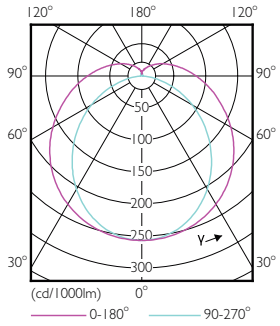


LEDtube 1500mm 20W G5 865 3000lm



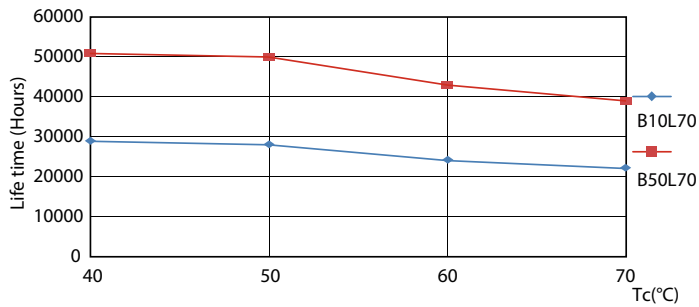
MASTER LEDtube EM/Mains T8

Photometric data

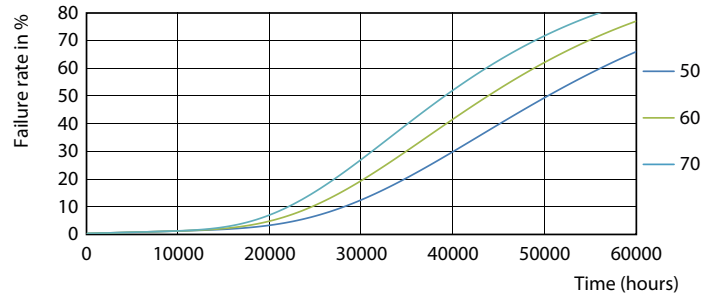


MAS LEDtube HO 14W G13 830-865 T8

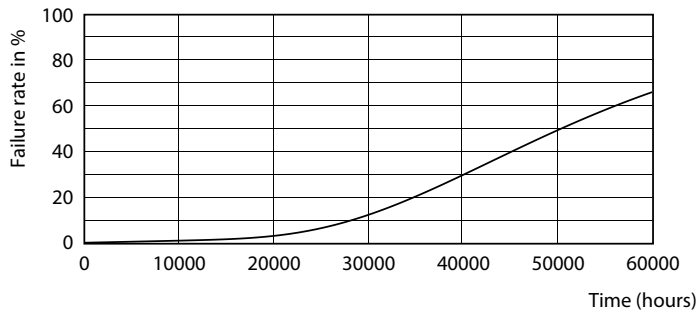
Lifetime



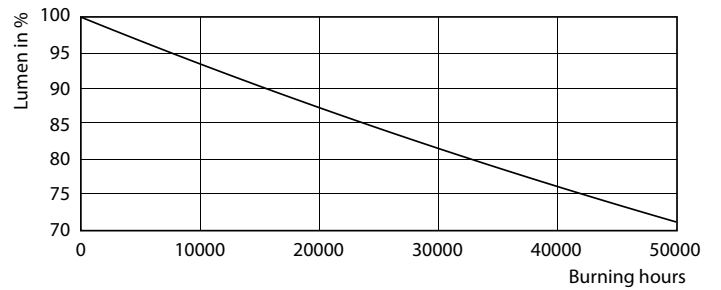
MAS LEDtube HO 14W G13 830-865 T8



MAS LEDtube HO 14W G13 830-865 T8



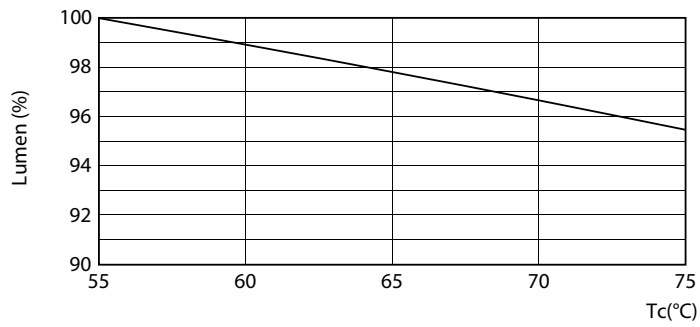
MAS LEDtube HO 14W G13 830-865 T8



MAS LEDtube HO 14W G13 830-865 T8

MASTER LEDtube EM/Mains T8

Lifetime



MAS LEDtube HO 14W G13 830-865 T8

